



Your Gateway to Aotearoa

If you seek expert local advice, you'll find it here. Live chat, free phone or visit in person at over 60 locations.

Northland

northlandnz.com

- 1 Kaitiāia Far North isite** Te Ahu, Cnr Matthews Ave & South Street, KAITIĀIA (09) 408 9450
- 2 Hokiangā isite** 29 Hokiangā Harbour Drive, OPONONI, HOKIANGA (09) 405 8869
- 3 Ipipiri Bay of Islands isite** The Wharf, Marsden Road, PAIHIA | (09) 402 7345
- 4 Whangārei isite** 92 Ōtaika Road, Raumanga, WHANGĀREI | (09) 438 1079

Auckland

aucklandnz.com

- 5 Tāmaki Makaurau Auckland isite** 188 Quay Street, AUCKLAND | (09) 365 9918

Waikato

waikatonz.com

- 6 Kirikiriroa Hamilton isite** ArtsPost Galleries & Shop 120 Victoria Street, HAMILTON (07) 958 5960
- 7 Morrinsville isite** 251 Thames Street, MORRINSVILLE (07) 889 5575
- 8 Te Aroha isite** 102 Whitaker Street, TE AROHA (07) 884 8052
- 9 Te Awamutu isite** 1 Gorst Avenue, TE AWAMUTU (07) 871 3259
- 10 Cambridge isite** 79 Queen Street, CAMBRIDGE | (07) 823 3456
- 11 Matamata isite** 45 Broadway, MATAMATA (07) 888 7260
- 12 Waitomo Caves isite** 21 Waitomo Village Road, WAITOMO CAVES (07) 878 7640
- 13 Ōtorohanga isite** 21 Maniapoto Street, ŌTOROHANGA (07) 873 8951
- 14 Te Kuiti isite** 160 Rora Street, TE KUITI (07) 878 8077
- 15 Tirau isite** State Highway 1, TIRAU (07) 883 1202

The Coromandel / Bay of Plenty

thecoromandel.com
bayofplentynz.com
rotoruanz.com

- 16 Whitianga isite** 66 Albert Street, WHITIANGA (07) 866 5555
 - 17 DOC Kauaeranga Visitor Centre** 995C Kauaeranga Valley Rd, THAMES | (07) 867 9080
 - 18 Waihi isite** 126 Seddon Street, WAIHI (07) 863 6715
 - 19 Tauranga isite** 1 Devonport Road, TAURANGA (07) 578 8103
 - 19a Mount Maunganui isite** Maunganui Rd, MOUNT MAUNGANUI
 - 20 Rotorua isite** 1167 Fenton Street, ROTORUA (07) 348 5179
 - 21 Titokorangi Redwoods isite** Longmile Road, ROTORUA (07) 348 5179
 - 22 Waipa isite** Waipa Mountain Bike Complex, Waipa State Mill Road, ROTORUA (07) 348 5179
 - 23 Whakatāne isite** Cnr Quay St & Kakaharoa Drive, WHAKATĀNE | (07) 306 2030
 - 24 Ōpōtiki isite** 70 Bridge Street, Ōpōtiki (07) 515 3031
 - 25 Kawerau isite** Plunket Street, KAWERAU (07) 323 6300
- ### East Coast
- tairawhitigisborne.co.nz
hawkesbaynz.com
- 26 Tūranganui-a-Kiwa Gisborne isite** 209 Grey Street, GISBORNE (06) 868 6139
 - 27 Wairoa isite** 9 Paul Street, WAIROA (06) 838 7440
 - 28 Ahuriri Napier isite** 100 Marine Parade, NAPIER (06) 834 1911
 - 29 Heretaunga Hastings isite** Shop 4, 319 Heretaunga Street East, HASTINGS (06) 873 0080
 - 30 Karanema Havelock North isite** Cnr Te Aute & Middle Roads, HAVELock NORTH (06) 877 9600

Lake Taupō/ Ruapehu

lovetaupo.com
visitruapehu.com

- 31 Taumarunui isite** Railway Stn, Hakiāha Street, TAUMARUNUI | (07) 895 7494
- 32 DOC Tongariro National Park Visitor Centre** Whakapapa Village, State Highway 48, MT RUAPEHU (07) 892 3729
- 33 Ohakune isite** 54 Clyde Street, Ohakune 0800 647 483

Western North Island

taranaki.co.nz
discoverwhanganui.nz
manawatunz.co.nz

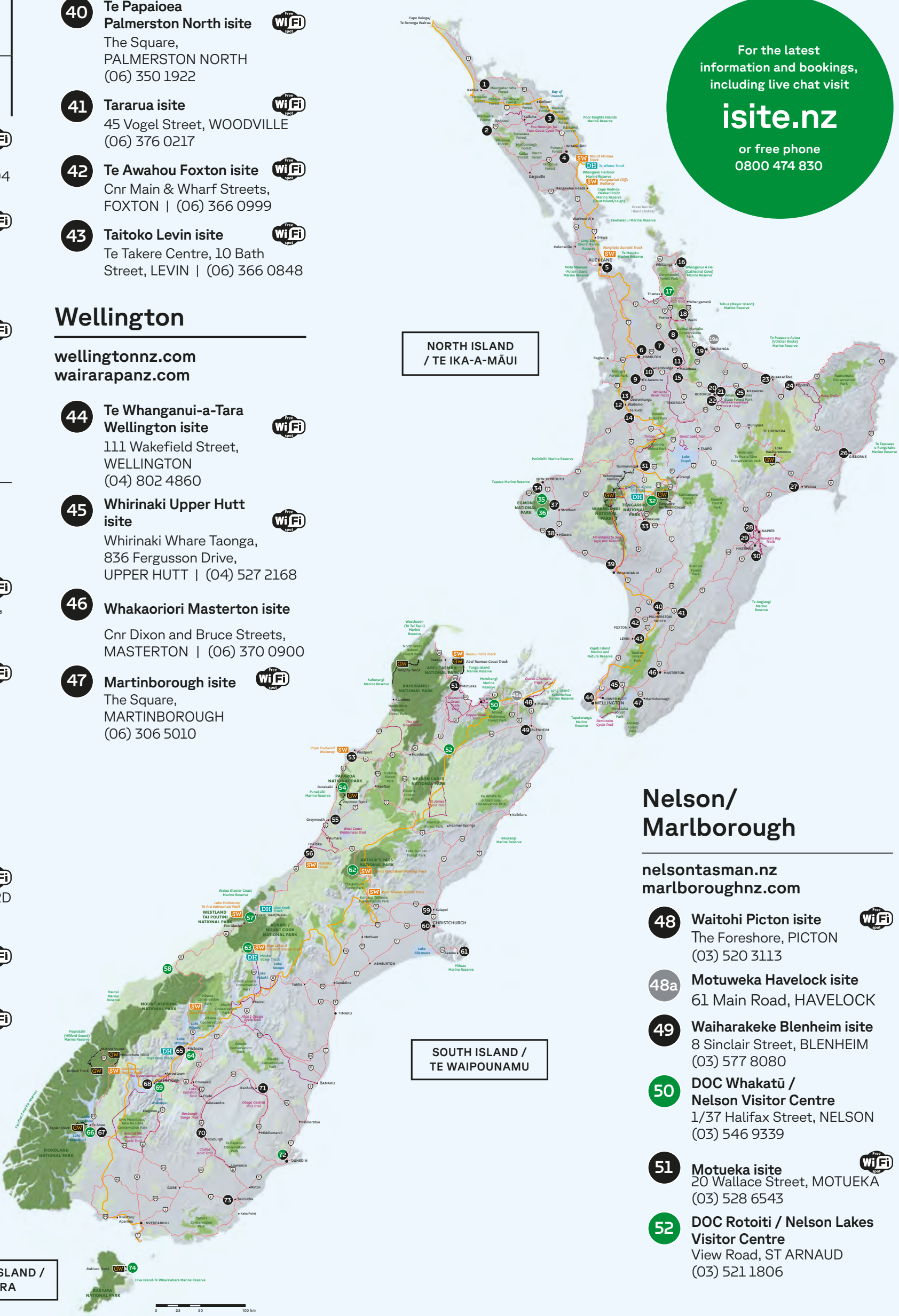
- 34 Ngāmotu New Plymouth isite** Puke Ariki, 65 St Aubyn Street, NEW PLYMOUTH (06) 759 0897
- 35 DOC Taranaki / Egmont National Park Visitor Centre** 2879 Egmont Road, EGMONT NATIONAL PARK (06) 756 0990
- 36 DOC Dawson Falls Visitor Centre** Manaia Road, EGMONT NATIONAL PARK (027) 443 0248
- 37 Whakāhaurangi Stratford isite** 54 Miranda Street, STRATFORD (06) 765 6708
- 38 Taranaki ki te Tonga South Taranaki isite** 55 High Street, HĀWERA (06) 278 8599
- 39 Whanganui isite** 31 Taupo Quay, WHANGANUI (06) 349 0508

- 40 Te Papaioea Palmerston North isite** The Square, PALMERSTON NORTH (06) 350 1922
- 41 Tararua isite** 45 Vogel Street, WOODVILLE (06) 376 0217
- 42 Te Awahou Foxton isite** Cnr Main & Wharf Streets, FOXTON | (06) 366 0999
- 43 Taikoto Levin isite** Te Takere Centre, 10 Bath Street, LEVIN | (06) 366 0848

Wellington

wellingtonnz.com
wairarapanz.com

- 44 Te Whanganui-a-Tara Wellington isite** 111 Wakefield Street, WELLINGTON (04) 802 4860
- 45 Whirinaki Upper Hutt isite** Whirinaki Whare Taonga, 836 Fergusson Drive, UPPER HUTT | (04) 527 2168
- 46 Whakaoriori Masterton isite** Cnr Dixon and Bruce Streets, MASTERTON | (06) 370 0900
- 47 Martinborough isite** The Square, MARTINBOROUGH (06) 306 5010



Nelson/ Marlborough

nelsontasman.nz
marlboroughnz.com

- 48 Waitohi Picton isite** The Foreshore, PICTON (03) 520 3113
- 48a Motuweka Havelock isite** 61 Main Road, HAVELOCK
- 49 Waiharakeke Blenheim isite** 8 Sinclair Street, BLENHEIM (03) 577 8080
- 50 DOC Whakatōi / Nelson Visitor Centre** 1/37 Halifax Street, NELSON (03) 546 9339
- 51 Motueka isite** 20 Wallace Street, MOTUEKA (03) 528 6543
- 52 DOC Rotoiti / Nelson Lakes Visitor Centre** View Road, ST ARNAUD (03) 521 1806

West Coast

westcoastnz.com

- 53 Kawatiri Westport isite** Coal Town Museum, 123 Palmerston Street WESTPORT | (03) 789 6658
- 54 DOC Paparoa National Park Visitor Centre** 4294 Coast Road, PUNAKAIKI (03) 731 1895
- 55 Māwhera Greymouth isite** Railway Station, 164 Mackay Street, GREYMOUTH (03) 768 7080
- 56 Hokitika isite** 36 Weld Street, HOKITIKA (03) 755 6166
- 57 DOC Westland Tai Poutini National Park Visitor Centre** 69 Cron St, FRANZ JOSEF GLACIER | (03) 752 0360
- 58 DOC Awarua / Haast Visitor Centre** Haast Junction, Cnr SH6 & Jackson Bay Road, HAAST (03) 750 0809

Canterbury

christchurchnz.com
kaikōura.co.nz
mackenziencz.com
vtourism.co.nz
visithurunui.co.nz

- 59 Kaiapoi isite** 143 Williams Street (Cnr Williams & Charles Streets), KAIAPOI | (03) 327 3134
- 60 Ōtautahi Christchurch isite** 31 Cathedral Square, CHRISTCHURCH (03) 365 1900
- 61 Akaroa isite** 61 Beach Road, AKAORA (03) 304 7784
- 62 DOC Arthur's Pass National Park Visitor Centre** 104 West Coast Road, ARTHUR'S PASS Village (03) 318 9211
- 63 DOC Aoraki / Mt Cook National Park Visitor Centre** 1 Larch Grove, AORAKI/MT COOK | (03) 435 1186

Central Otago/ Southern Lakes

lakewanaka.co.nz
queentownnz.co.nz
fiordland.org.nz
centralotagonz.com

- 64 DOC Tititea/Mt Aspiring National Park Visitor Centre** 1 Ballantyne Road, WĀNAKA (03) 443 7660
- 65 Wānaka isite** 103 Ardmore Street, WĀNAKA (03) 443 1233
- 66 DOC Te Rua-o-te-moko / Fiordland National Park Visitor Centre** Lakefront Drive, TE ANAU (03) 249 7924
- 67 Te Anau Fiordland isite** 85 Lakefront Drive, TE ANAU (03) 249 8900
- 68 Tāhuna Queenstown isite** Clocktower building, Cnr Camp & Shotover Streets, QUEENSTOWN (03) 442 4100
- 69 DOC Whakatipu-wai-Māori / Queenstown Visitor Centre** 50 Stanley Street, QUEENSTOWN (03) 442 7935
- 70 Roxburgh isite** 120 Scotland Street, ROXBURGH (03) 262 7999
- 71 Mānīatoto Ranfurly isite** 3 Charlemont Street, RANFURLY (03) 262 7999

Otago/Southland

waitakinz.com
dunedinnz.com
cluthanz.com
southlandnz.com

- 72 Ōpōtiti Dunedin isite** DOC Ōpōtiti Dunedin Visitor Centre 50 The Octagon, DUNEDIN (03) 474 3300
- 73 Clutha isite** 6 Clyde Street, BALCLUTHA (03) 418 0388
- 74 DOC Rakiura National Park Visitor Centre** 15 Main Road, OBAN, STEWART ISLAND, (03) 219 0009



isite is New Zealand's official visitor information network with over 60 locations nationwide.

isite knows all the best things to do, places to stay and ways to get there. Plus they'll take care of the bookings.

Every person who works at isite is a travel expert for their own home town, so they can help you to find the sorts of activities, attractions, accommodation and transport that only a local would know.

You can be sure that once you have experienced the latest and greatest of what one place has to offer, isite will help connect you with their equally friendly isite colleagues at the next stop on your journey.

So whether you've come around the world or down the road you can rely on isite for expert local knowledge and bookings throughout New Zealand.

- Itinerary planning and information
 - bookings nationwide - accommodation, transport, activities, attractions
 - free maps, weather & mountain safety information
 - local information - events, attractions, restaurants & more!
 - many isites offer free Wi-Fi - look for the logo on the map
- Most isites are open every day (except Christmas Day). Some isites operate reduced hours.

Find an isite near you or get help over live-chat at www.isite.nz or call 0800 474 830.



The Department of Conservation (DOC) operates to protect and care for Aotearoa New Zealand's natural environment and historic and cultural heritage. DOC are the largest provider of visitor activities in Aotearoa, manage the largest heritage portfolio in the country and manage a third of Aotearoa New Zealand's land area as public conservation land and waters. From forest parks to scenic reserves, alpine areas to protected coasts, there are hundreds of special conservation places to visit.

Conservation campsites are places to relax, enjoy and explore the outdoors. Choose from more than 200 campsites in forest settings, lakeshores and sandy beaches. DOC manages a network of over 950 huts of all shapes and sizes. They provide unique places to stay, refuge from bad weather, or rest and recover when you're out exploring the outdoors.

For more information about DOC visit www.doc.govt.nz

DOC Visitor Centres

DOC visitor centres are located nationwide and are staffed by DOC rangers who have first-hand, in-depth local knowledge about conservation places and outdoor recreation activities and adventures. Our friendly rangers can assist you to plan and prepare to enjoy the outdoors safely.

Visit our DOC visitor centres for:

- help with your DOC accommodation plans and bookings
- up to date weather forecasts
- outdoor visitor safety information
- advice about how to protect our wildlife and care for Aotearoa
- latest track information and alerts about conservation places

Find out where DOC visitor centres are located, opening times, and contact details to email or speak to a ranger at: www.doc.govt.nz/visitorcentres



Ngā Haerenga Great Rides of New Zealand's are an unforgettable way to soak up breathtaking scenery while visiting must-see attractions and discovering hidden gems.

See the best of Aotearoa New Zealand by bike on adventures varying from a leisurely few hours to an epic eight days. Mostly off-road and predominantly easy to intermediate, they traverse a remarkable range of landscapes. From sparkling coastlines to deep forest and rocky mountain passes.

There really is something for everyone, with excellent cycling services making things easy. Most Great Rides are close to towns and cities where everything from bike hire to shuttles, luggage transfers and fully guided trips are on offer. Welcoming and atmospheric accommodation, cafes and restaurants along the way are part of the experience. Every day is a special journey on the Great Rides. So what are you waiting for? Plan your next ride at nzcyclistrail.com



Te Araroa is New Zealand's Trail - taking in spectacular New Zealand landscapes from beaches to volcanoes to forests to cities. The 3000km route stretching from Cape Reinga in the North of New Zealand to Bluff in the South.

Te Araroa is the greatest New Zealand adventure there is - walk it all or walk a short section ranging from a few hours to a few days. Visit www.teararoa.org.nz

TE ARAROA TRAIL



Qualmark represents the highest standard of sustainable and quality travel experiences. Owned by Tourism New Zealand and backed by leading industry organisations, Qualmark is New Zealand tourism's official quality assurance organisation. Visitor activities, service and transport providers are issued with an official quality rating award, and accommodation providers also receive a star grading.

A Trusted Guide to Our Place

You can book any Qualmark business with confidence, knowing the experience is quality assured to the highest standards. Whether you're looking for places to stay, things to do or ways to get around, a Qualmark business represents the highest quality tourism experience New Zealand has to offer.

All Qualmark businesses have been assessed by our team of business advisors, using a stringent framework, to recognise sustainable New Zealand tourism businesses that deliver exceptional world-class experiences as an integral part of everything they do.

COVID Clean Approved

Qualmark members also displaying the COVID Clean Approved assessment logo, can provide a level of assurance to all travellers that cleaning protocols and operational procedures around COVID-19 have been met.

Look out for Qualmark businesses across New Zealand displaying our official mark of quality assurance giving you confidence you'll find a warm welcome from a business that operates in a professional way and protect what makes New Zealand unique.

For more information visit www.qualmark.co.nz



Tiaki means to care for people and place. The Tiaki Promise is a commitment to care for New Zealand, for now and for future generations. New Zealand is precious, and everyone who lives and travels here has a responsibility to look after it.

By following the Tiaki Promise, you are making a commitment to New Zealand. To act as a guardian, protecting and preserving our home.

Tiaki Promise

While travelling in New Zealand I will:

- Care for the land, sea and nature, treading lightly and leaving no trace
- Travel safely, showing care and consideration for all
- Respect culture, travelling with an open heart and mind

www.tiakinewzealand.com #TIAKIPROMISE



isite NZ has partnered with Trees That Count. Get on board and show your love for Aotearoa by planting a forest of the future. You can gift a tree through your nearest isite visitor information centre. For more information walk into a centre or visit www.treesthatcount.co.nz

TREES THAT COUNT



We want you to stay safe while enjoying the great natural attractions New Zealand has to offer. Here are some websites that provide information to keep you safe.



New Zealand Police
New Zealand is relatively safe but it's not crime free. It is important to keep safe and look after yourself as you would at home. Visit www.police.govt.nz/visitor-guide

Call 111 for emergencies. Use 105 for Police non-emergencies.



AdventureSmart
Be AdventureSmart and Know Before You Go. AdventureSmart provides tips, links and advice for you to plan and prepare any outdoor, boating, water, snow or air activity safely, for any level of ability. Visit www.adventuresmart.org.nz



Camping Responsibly
Where can I camp? Find out how to camp responsibly in New Zealand. Visit www.camping.org.nz or www.campermate.co.nz



DriveSafe
What's different about driving in New Zealand? Driving is a great way to experience all New Zealand has to offer, but driving here can be different to driving in other countries. Visit www.drivesafe.org.nz for information about New Zealand road rules and etiquette, and other useful tips for drivers who are unfamiliar with our roads.

These routes are marked with distinctive brown road signs. For more information visit: newzealand.com/int/themed-highways

Twin Coast Discovery Highway: This route begins in Auckland and travels north, tracing both coasts to Cape Māui. The Drive is a scenic coastal route, highlighting a procession of beautiful beaches, opportunities for fishing, surfing, diving and dolphin encounters; cultural and historical sites. It is a scenic coastal route.

Pacific Coast Highway: Linking the Coromandel, Bay of Plenty and Eastland with Auckland in the north and Hawke's Bay in the south, this scenic coastal route highlights the rugged coastal scenery and beaches, forest wilderness and game reserves. This route should go down the Pohorua Road to the coast, then follow the coast to the south. The cities of Tauranga, Gisborne, Napier and Hastings will satisfy your year to wine, dine and shop.

Thermal Explorer Highway: This route runs between the Bay of Plenty and Hawke's Bay, following the volcanic center of the island. You'll have the chance to discover the caves around Watomata in the Hamilton & Waikato region, visit the geothermal wonders of the Bay of Plenty, and Tongariro National Park and Hawke's Bay Wine Country. Expect equal quantities of relaxation and adventure. You'll find a lot of interesting information about the Explorers are known as The Great New Zealand Touring Route.

Forgotten World Highway: The 150km Forgotten World Highway is a scenic route that highlights the region's outstanding scenery, scenic outcrops and landscapes. Following ancient Māori trade routes and 19th century gold mining routes, this highway is a scenic route. The route follows the route of the highway, which is a scenic route. The route follows the route of the highway, which is a scenic route.

Classic New Zealand Wine Trail: See details above.

Alpine Pacific Touring Route: The Alpine Pacific Touring route takes you to the spectacular alpine peaks and valleys of the Waikato, and the alpine delights of Hamner Springs and the marine mammal encounters of Kaikoura. Between destinations, you'll enjoy the scenic beauty of the Marlborough Sounds.

The Inland Scenic Z2 Route: The perfect road journey for travellers who like to get off the main highways and find real rural life. The route starts at Amberley, in the north of the South Island, and heads south through the Marlborough Sounds to State Highway 1. There are fabulous views of the Southern Alps on one side of the road, complemented by the green hillsides of the Canterbury region on the other.

The Great Alpine Highway: This coast-to-coast route traverses the Southern Alps. From Christchurch, the route follows the rugged and scenic Canterbury Alps and over rainforests before rising to traverse the Southern Alps and Arthur's Pass National Park. Highlights include the impressive Mt. Cook National Park, the world's highest mountain, Mt. Cook, and exploring natural wonders like the Castle Hill Rocks and Cave Stream Reserve.

Great Coast Road: The Great Coast Road stretches from the rugged and scenic Marlborough Sounds to the ancient limestone cliffs of Paparoa National Park, where the world's smallest penguin resides, through Charleston and the spectacular limestone caves of the Pinnacles, Caves and Blowholes. Driving it is one go only takes about 90 minutes, but it's best to slow down, enjoy the ride and take in some New Zealand scenery.

Glacier Highway: The Glacier Highway hugs the coastline from Kumara, through Hokitika and all the way down to the West Coast. It's a scenic route that takes you through dense coastal scrub and West Coast rainforest, making it one of New Zealand's most scenic routes. It passes through a national park with some of the best beaches, lakes, and, as its namesake states, mighty glaciers.

Central Otago Touring Route: This 341-kilometre journey follows scenic highways from Otago/Dunedin and the Central Otago region to the heart of the South Island at Queenstown. It winds through the heart of Central Otago taking in characterful settlements such as Midlandtown, Cromwell, Dunstons, and the scenic beauty of the Otago region of Alexandra, Cromwell, Arrowtown and Queenstown. Take the road less travelled and enjoy the memorable local Ottago.

Southern Scenic Route: Starting in the historic city of Dunedin, this route follows the wild southern coast through the rugged and scenic Marlborough Sounds to the end of the world at Queenstown. Highlights include wildlife encounters along the Catlins coast, the classic motifs of Invercargill, the rugged and scenic Fiordland National Park, and the southern local delicacies found throughout.

